

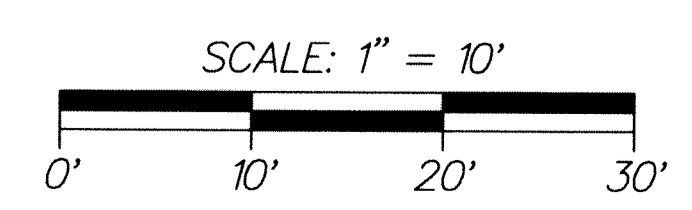
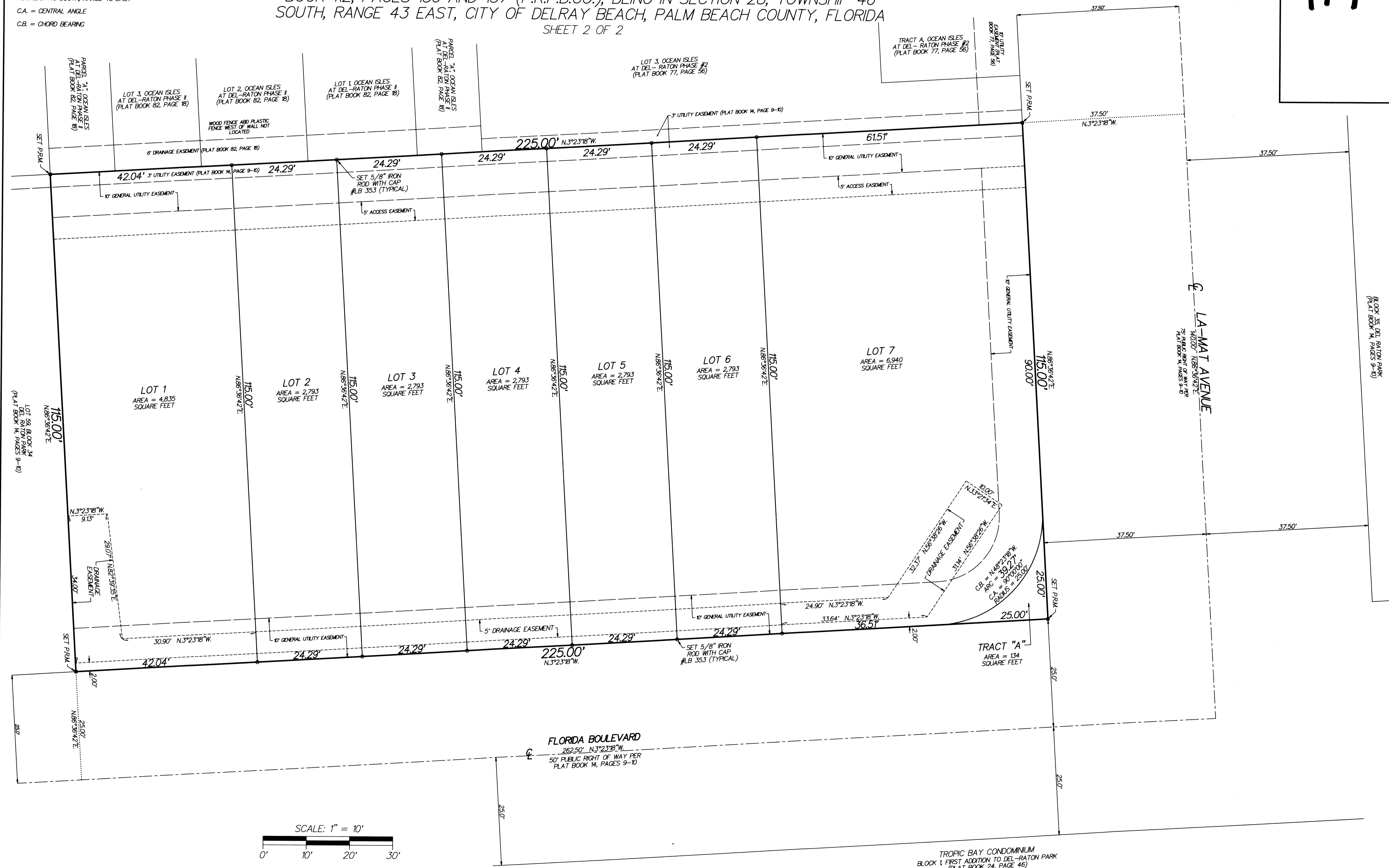
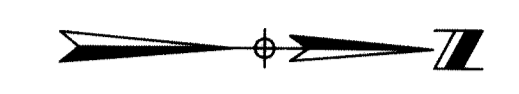
119

THIS INSTRUMENT WAS PREPARED BY PAUL D. ENGLE, IN THE OFFICE OF O'BRIEN, SUITER & O'BRIEN, INC., 955 N.W. 17TH AVENUE, SUITE K-1, DELRAY BEACH, FLORIDA 33445 (561) 276-4501

# DELRAY EAST TOWNHOMES

BEING A REPLAT OF LOTS 64 THROUGH 68, INCLUSIVE, BLOCK 34, DEL RATON PARK, AS RECORDED IN PLAT BOOK 14, PAGES 9 AND 10 (P.R.P.B.CO.) AND LOTS 1 THROUGH 3, INCLUSIVE, FLORIDA BOULEVARD TOWNHOMES AT DELRAY BEACH, AS RECORDED IN PLAT BOOK 112, PAGES 156 AND 157 (P.R.P.B.CO.), BEING IN SECTION 28, TOWNSHIP 46 SOUTH, RANGE 43 EAST, CITY OF DELRAY BEACH, PALM BEACH COUNTY, FLORIDA  
SHEET 2 OF 2

LEGEND:  
 CL = CENTERLINE  
 ■ = PERMANENT REFERENCE MONUMENT (P.R.M.) (4"x4" CONCRETE MONUMENT STAMPED FROM LB3533) UNLESS STATED OTHERWISE  
 ○ = SET 5/8" IRON ROD WITH CAP #LB 353 UNLESS STATED OTHERWISE  
 P.R.P.B.CO. = PUBLIC RECORDS OF PALM BEACH COUNTY  
 SECTION 28/46/43 = SECTION 28, TOWNSHIP 46 SOUTH, RANGE 43 EAST  
 C.A. = CENTRAL ANGLE  
 C.B. = CHORD BEARING



TROPIC BAY CONDOMINIUM  
 BLOCK 1 FIRST ADDITION TO DEL-RATON PARK  
 (PLAT BOOK 24, PAGE 46)